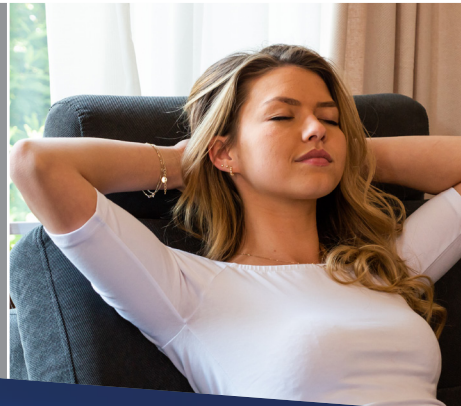


LPDRIVE™ COMPONENTS



Leggett & Platt
HOME FURNITURE

LPHomeFurniture.com

ACTUATORS

LPDRIVE™ actuators are cutting-edge products manufactured with industrial-strength construction for durability and smooth operation within high-stress areas. Its exclusive linear design has been awarded with all global certifications. Other electrical components include transformers, handsets/switches, power cords, 2 & 3 adapter cables, and extension cables for a one-stop shop for all your electrical component needs.

Metal-to-the-Floor



7721870001



7721400001



7721010201



7722420001

	Mechanism/Description	L&P #	Operating Specs		Stroke Speed	Force-N
			Retracted (mm)	Stroke (mm)		
Metal-to-the-Floor	Wall Hugger® ST/Zero Wall Primary	7722150001	179	333	47	800
	Wall Hugger® ST/Zero Wall PM-A	7721870001	174	325	55	1500
	Power Glider/Rocker	7721400001	157	204	40	1500
	Power Glider/Rocker (Long Cable w/ springs)	7722140001	157	204	40	1500
	Rocker Glider Std (Long Cable)	7722420001	157	204	40	1000
	Wall Hugger® ST/Zero Wall	7721010201	179	333	47	800

Lifts



7721440001



7721520001



7721540101



7721530101

	Mechanism/Description	L&P #	Operating Specs		Stroke Speed	Force-N
			Retracted (mm)	Stroke (mm)		
Lifts	220-250lbs 1-Motor Lifts	7721470001	395	220	7	6000
	300 EZ/360 EZ Zero Wall 1-Motor Lift	7721440001	157	307	7	6000
	Alpha 2-Motor Lift Standard (Primary)	7722070001	436	92	7	5000
	Alpha 2-Motor Lift Standard (Secondary)	7721820001	384	204	6	8000
	400EZ 2-Motor Lift Primary Layflat (2-Pin Male, 2-Pin Female, 5-Pin Female)	7721490001	370	158	7	5000
	400EZ 2-Motor Lift Primary (2-Pin Male, 2-Pin Female, 5-Pin Female)	7721500001	416	112	7	5000
	400EZ 2-Motor Lift Secondary (2 Prong, 5-Pin)	7721480001	384	207	7	6000
	5411 (OEC2) 1-Motor Lift	7721520001	387	203	7	6000
	5511 (OEC2) 2-Motor Lift (Primary)	7721540101	445	110	11	5000
	5511 (OEC2) 2-Motor Lift (Secondary)	7721530101	413	181	8	6000
	CloudZero® 3-Motor Lift	7721430001	205	49	7	3500

ACTUATORS

Wood-to-the-Floor



	Mechanism/Description	Part Number	Operating Specs		Stroke Speed	Force-N
			Retracted (mm)	Stroke (mm)		
Wood-to-the-Floor	Allevia® (Primary)	7721380001	238	84	8	6000
	Allevia® (Secondary)	7721390001	305	139	20	2000
	EasyCliner Standard	7721140001	471	272	36	800
	Europia™	7721510001	254	112	16	2000
	EnVisiOn™ Rocker	7721360001	473	222	33	2000
	Evolution2020™	7721110101	448	254	26	2000
	G30 Power (US)	7721260001	304	134	20	2000
	InNova®	7721150001	437	288	42	1000
	InNova® PM	7721160001	532	295	42	1000
	300 Plus PM-A	7721890001	358	211	40	1500
	Contempo™ XL PM-B	7721950001	114	208	45	700
	SuperCliner and PO3	7721120101	435	250	36	800
	Suprema™ Advantage™ CloudZero® 2-Motor Short (Primary)	7722160001	508	368	40	2000
	Suprema™ Advantage™ Deep Seat/PM/CZ (Restricted Recline)	7721560201	562	337	40	2000
	Suprema™ Advantage™ Deep Seat/PM/CZ (Long Rear Motor Tube)	7721550201	562	368	40	2000
	Suprema™ Advantage™ PM/CZ (Short Rear Motor Tube)	7721590101	508	368	40	2000
	Suprema™ Advantage™ Variable Pitch (Primary)	7721570201	358	211	40	1500
	Suprema™ Advantage™ Variable Pitch (Secondary)	7721580001	268	118	22	1800
	Suprema™ Ottoman Plus - Fast	7721370001	372	219	50	800
	Suprema™ Advantage™ TV (Short Rear Motor Tube)	7721600001	508	262	40	1500
	Suprema™ Ottoman Plus	7721180101	372	219	42	800
Suprema™ Retro	7721100101	486	342	36	850	
3374 Suprema™ 1-Motor	7721130001	499	345	42	1300	
Xtreme High Leg 1-Motor	7722040101	582	356	34	1300	

Cinema, Headrests

	Mechanism/Description	Part Number	Operating Specs		Stroke Speed	Force-N
			Retracted (mm)	Stroke (mm)		
Cinema	SRL Cinema CZ 1M	7721640001	399	230	25	1300
	SRL Cinema CZ 2M (Primary)	7721610001	280	133	15	1300
	SRL Cinema CZ 2M (Secondary)	7721620001	233	74	15	1300
	SRL Cinema CZ 2M (Secondary) Add Otto Ext	7721630001	233	90	15	1300
Headrests	Contempo™ Slim	7721090001	180	60	10	800
	Versa-Tilt™ (5-Pin Female) 42 Degree Headrest Tilt	7721080101	190	33	12	800
	Versa-Tilt™ (2-Pin Male) 43 Degree Headrest Tilt	7721040101	190	50	18	800
	Versa-Tilt™ (2-Pin Male, 5-Pin Female) 43 Degree Headrest Tilt	7721070101	190	50	18	800
	Versa-Tilt™ SL (2-Pin Male) 42 Degrees Headrest Tilt	7721050101	190	33	11	800
	Versa-Tilt™ SL (2-Pin Male) 56 Degree Headrest Tilt	7721030101	190	45	11	800
	Versa-Tilt™ SL (2-Pin Male, 5-Pin Female) 56 Degree Headrest Tilt	7721060101	190	45	11	800
Versa-Tilt™ (2-Pin Male) 50 Degrees Headrest Tilt	7722350001	190	42	12	500	

HANDSETS and SWITCHES



Mechanism Compatibility	Description	Part Number	Motors	Frame Attached	Wand	
1	All	Switch, 1-Motor, 2 Buttons, Oval, Black	7720310101	1	x	
2	All	Switch, 2-Motor, 4 Buttons, Oval, Black	7720320101	2	x	
3	All	Switch, 1-Motor, 2 Buttons, In-Seat Touch	7720330001	1	x	
4	All	Switch, 2-Motor, 4 Buttons, In-Seat Touch	7720340001	2	x	
5	All	Switch, 1-Motor, 2 Buttons, Plastic Rectangular with USB-A	7720350001	1	x	
6	All	Switch, 1-Motor, 2 Buttons, Stainless Steel Rectangular	7720360001	1	x	
7	All	Switch, 2-Motors, 4 Buttons, Stainless Steel Rectangular with USB-A LHF	7720370001	2	x	
8	All	Switch, 2-Motors, 4 Buttons, Stainless Steel Rectangular with USB-A RHF	7720380001	2	x	
9	All	Switch, 1-Motor, 2 Buttons, Plastic Oval Black with USB-A Non Illuminated	7720390001	1	x	
10	All	Switch, 1-Motor, 2 Buttons, Plastic Oval Black with USB-A Continuous Backlight	7720400001	1	x	
11	All	Switch, 1-Motor, 2 Buttons, Metal Rectangle with USB-A	7720410001	1	x	
12	All	Switch, 2-Motors, 4 Buttons, Toggle, Chrome with Home and USB-A/C	7720510001	2	x	
13	All	Switch, 3-Motors, 6 Buttons and Home Button with USB-A/C	7720520001	3	x	
14	All	Switch, 1-Motor, 2 Buttons with Engraved Arrows and USB-C	7722610001	1	x	
15	All	Switch, 2-Motor, 4 Buttons and Home with Engraved Arrows and USB-C	7722620001	2	x	
16	All	Switch, 3-Motor, 6 Buttons and Home with Engraved Arrows and USB-C	7722630001	3	x	
17	All	Handset, 1-Motor, 2 Buttons, Black	7720540101	1		x
18	All	Handset, 2-Motor, 4 Buttons, Black	7720570101	2		x
19	All	Handset, 2-Motor, 6 Buttons, Black	7720580101	2		x
20	All	Handset, 1-Motor, 2 Buttons, Black with USB-C	7722520001	1		x
21	All	Handset, 2-Motor, 5 Buttons, Black with Home USB-C	7722540001	2		x
22	All	Handset, 3-Motor, 7 Buttons, Black with Home USB-C	7722560001	3		x
23	All	Handset, 4-Motor, 9 Buttons, Black with Home USB-C	7722580001	4		x
24	All	Handset, 1-Motor, 2 Buttons with Steel Plate and Soft Touch	7722640001	1		x
25	All	Handset, 2-Motor, 4 Buttons with Steel Plate and Soft Touch	7722650001	2		x

TRANSFORMERS



	Mechanism Compatibility	Description	Part Number
1	All	Power Supply with Battery Backup - 2A	7720000001
2	All	Power Supply without Battery Backup - 2A with 2-pin Pigtail	7720020001
3	All	Power Supply Wall Plug without Battery Backup - 2A 110v	7720030001
4	All	Battery Power Pack Supply	7720040001
5	All	Power Supply 3 Amp	7720080001
6	All	Power Supply Kit (Transformer, US power cable 1.5m, 3m Ext. Cable)	7720300001
7	All	Power Supply Kit (Transformer, US power cable 1.5m, 3m Ext. Cable, Battery)	7720500001
8	All	2500mAh Battery Pack	7720450001

CABLES

	Mechanism Compatibility	Description	Part Number	
1	All	Cable Extension (2-Pin - 1,5 Meter)	7720100001	
2	All	Cable Extension (2-Pin - 3 Meters)	7720110001	
3	All	"Y" Splitter Cable Extension - Short (2-Pin Male - 2-Pin Female - 0,18 Meter)	7720120001	
4	All	"Y" Splitter Cable Extension (2-Pin Male - 2-Pin Female - 1 Meter)	7720130001	
5	All	Cable Extension (2-Pin - 2,5 Meters)	7720140001	
6	All	Extension Cable w/Socket (1 Meter)	7720150001	
7	All	1-Motor Cable Adapter (2PM to 2PF/5PF)	7720160001	
8	All	2-Motor Cable Adapter (2PF & 5PM to 5PF)	7720170001	
9	All	3-Motor Cable Adapter (2PF & 2PF & 5PM to 7PF)	7720180001	
10	All	2-Motor - 3-Motor adapter (5PM & 2PF TO 7PF)	7720190001	
11	All	US Power Cord (1,5 Meters)	7720200001	
12	All	US Power Cord (3,05 Meters)	7720210001	
13	All	Austr Power Cord (3,05 Meters)	7720220001	
14	All	EU Power Cord (1,5 Meters)	7720230001	
15	All	EU Power Cord (3,05 Meters)	7720240001	
16	All	UK Power Cord (1,5 Meters)	7720250001	
17	All	Austr Power Cord (1,5 Meters)	7720260001	
18	All	Korean Power Cord (1,5 Meters)	7720480001	
19	All	Polarity Changing Cable	7720270001	
20	All	Control Extension Cable (5-Pin Male, 2-Pin Female - 1.5 Meters)	7720430001	
21	All	Safety End Cap (2-Pin Female)	7720440001	
22	All	Secondary Motor Cable (2-Pin Male - 3 Meters)	7720600001	

CONTROL BOXES

Mechanism Compatibility	Description	Part Number
All	1-Motor Control Box	7722510001
All	2-Motor Control Box	7722530001
All	3-Motor Control Box	7722550001
All	4-Motor Control Box	7722570001

NOTE: LPDrive can be used to replace a variety of inefficient, existing products. However, depending on the product and brand it is replacing, its polarity may be opposite and cause the furniture to operate in reverse of what the button says to do. This is more commonly seen with handsets/switches.

Leggett & Platt
HOME FURNITURE

LPHomeFurniture.com