

YELMO

Swivel Base Mechanism



KINTEC-SOLUTION
technic to relax

A *Leggett & Platt* COMPANY



www.kintec-solution.com





YELMO

Swivel Base Mechanism

130

kilograms (286 lbs)
lifecycle-tested

100

kilograms (220 lbs)
backrest weight
capacity

355

millimeter seat
height using
swivel column

Modular
system

Chair
Application

Straight
and conical
seat widths

69°

footrest inclination
in closed position

371

millimeter footrest
height (when using
112.5 mm column)

Manual
and power



Product safeguarded by international patents

Seating Positions:



Sitting



Reading/TV Position



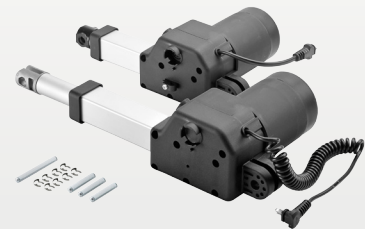
Full-Recline

Creatively Urban European Living...Motion Furniture Redefined

Applications



Manual



Power (1 & 2 Motors)

Backrest Options

OPTION A

Backrest straight and tapered with a headrest friction-hinge. Height: 790 mm.

OPTION B

Backrest straight with headrest friction-hinge.
- Standard height: 790 mm
- 3 adjustable heights: 760 | 790 | 840 mm

OPTION C

Backrest straight with headrest step-hinge 4° x 9° | 36°
- Standard height: 790 mm
- 3 adjustable heights: 760 | 790 | 840 mm

OPTION D

Backrest short; height 530 mm with adjustable headrest bars in 3 steps.

OPTION E

Backrest straight with a 5-pivot-point hinge bar. Height: 760 mm | 523 mm.

OPTION F

Vario-Kit 40 for increased seat depth of 40 mm.

A



75 kg
100"

B



100 kg
92", 100"

C



100 kg
92", 100"

D



100 kg
100"

E



100 kg
100"

F



Optional
92", 100"





Pedestal Base Options

More pedestal bases are available; please refer to the pedestal base brochure.

A



B



C



D



E



F



Swivel Column Options

* Column B is designed for pedestal bases B & C (above).

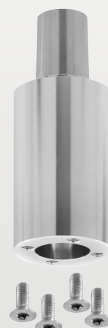
■



■



* Designed for pedestal bases B & C



■



Armrest Options

OPTION A

Armrest adaptor for wooden arms.

OPTION B

Armrest adaptors for "Milano" and Split (Option C) armrests.

OPTION C

Aluminum armrest "Milano" and "Split" inclusive of cover plates.

■



■



■



Milano

Split





Gas Spring / Manual Operation Options

OPTION A

Loop with gas spring and Bowden release, 600 mm.

OPTION B

Lever with gas spring and Bowden release, 600 mm.

OPTION C

Push-button with gas spring and Bowden release, 500 mm.

A



B



C



Power Supply

Transformer



Battery



Handsets, Two-/ Four-Button Commands, and Touch Sensor

Battery Charging Sockets Circled.

* Use only with wall or floor transformer.

Handset

Incl. battery charging socket



Command 3-button

Buttons only

Charging plug

USB port *



Touch-sensor switch 2-motor mechanism *



Personalise Yelmo by simply using the options listed within the brochures to design the furniture mechanism that will harmonise well with your bespoke furniture design.

Beginning with Power or Manual, list down all the features you need and our sales representative will take it from there...simple as that.

Application

Swivel/Arms

Backrest Style

Pedestal Base

Swivel Column

Armrest

Gas Spring (manual only mechanisms)

Power Supply

Controller

